



Rea Memorials

Since 1928

*Distinctive
Memorial
Collection*



Rea Memorials

We work with specialist stonemasons who have generations of experience and knowledge in stonemasonry.

Together we provide the guidance and expertise needed when choosing a memorial.

All our memorials are produced using the finest quality sourced materials and are fitted by British Registered Accredited Memorial Masons using the latest National Association of Monumental Masons approved ground anchoring systems.

In addition to new memorials, we also repair, re-fix, add additional inscriptions and carvings, re-gild and provide personalised porcelain plaques.

Not all memorials are accepted by Parish Councils, Churchyards and Municipal cemeteries and therefore an application form is required to approve the type of material used, wording and size of memorial before authority is given. This guidance will be given.

This brochure only gives a selection of the most popular memorials. To view a more extensive range you can visit online;

www.reamemorials.co.uk www.odlingsmemorials.co.uk or
www.northeastgranite.co.uk

You can also call into one of our offices in Stokesley, Darlington and Great Ayton, drop us a line at reamemorials@reafuneralservice.co.uk or telephone for an appointment on 01642 711999

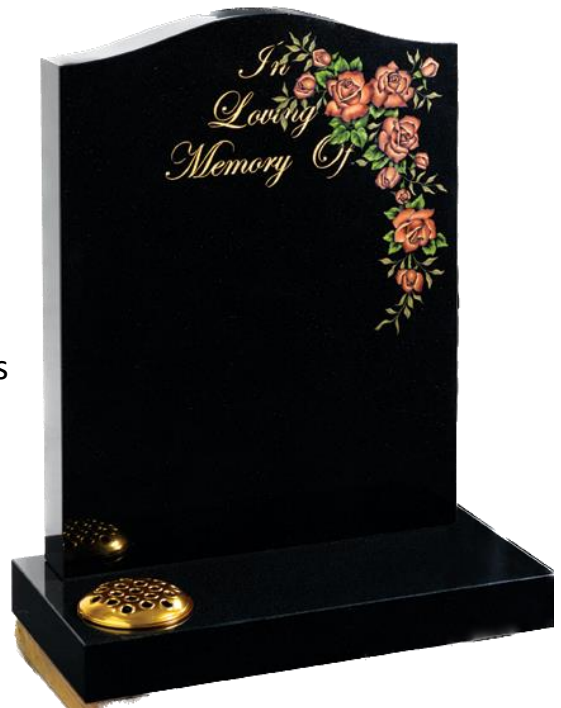


Budworth

- All polished black granite
- Deep carved roses with antique finish
- Head 2'6" x 2'0" x 4" / Base 2'6" x 1'0" x 4"

Carnaby

- Shown in polished black granite with flower carvings
- Other materials & flowers available
- Head 2'3" x 1'9" x 3" / Base 2'0" x 1'0" x 3"





Crossfell

- All polished black granite
- Ogee checker shoulders
- Coloured scene (others available)
- Head 2'6" x 2'0" x 4" / Base 2'6" x 1'0" x 4"

Ferriby

- Part polished S African dark grey granite
- Carved flowers on headstone and base
- Other materials and flowers available
- Head 2'6" x 1'9 x 3" / Base 3" x 2'0" x 1'0"





Garrowby

- A fresh approach to the church window design
- Shown in South African dark grey granite
- Other materials available
- Head 2'6" x 2'0" x 4" / Base 2'6" x 1'0" x 6"

Hamsterley

- Nabresina "bow top" with chamfer
- Relief carved bluebells
- Available without carving
- Head 2'3" x 1'9" x 3" or 2'6" x 2'0" x 4"
- Base 2'0" x 1'0" x 3" or 2'6" x 1'0" x 4"





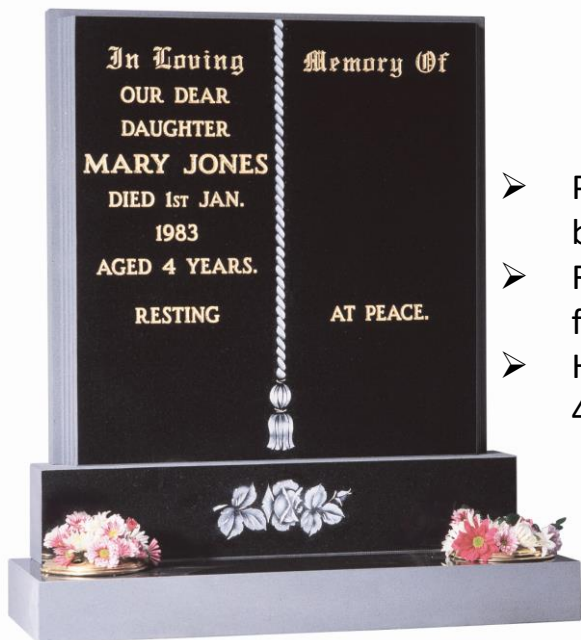
Hexham

- Part polished light grey granite
- Bow-top with blasted border and deep carved roses
- Antique finish
- Available without carving
- Head 2'3" x 1'9" x 3" / Base 2'0" x 1'0" x 3"

Hotham

- Elegant polished black granite heart shape
- Contrasting carved roses
- Other materials and flower designs available
- Head 2'3" x 1'9" x 3" Base 2'0" x 1'0" x 3"





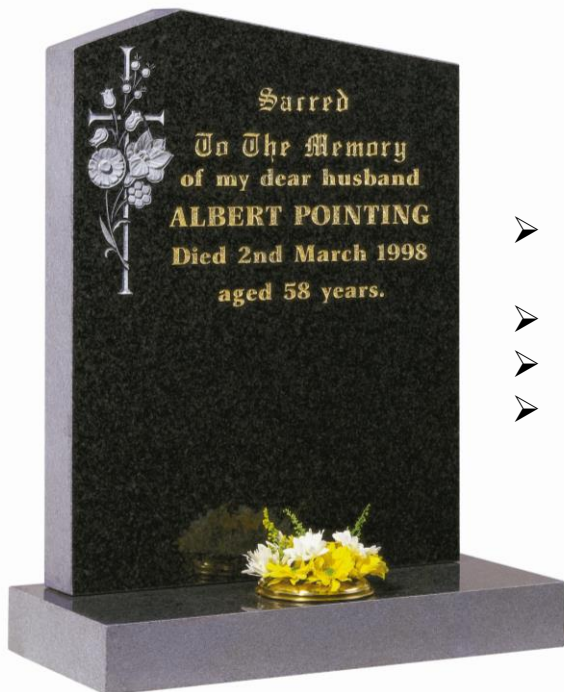
Jones

- Part polished black granite book
- Rose plinth and base (other flowers available)
- Head 2'0" x 2'0" x 3" / 2'2" x 4" x 5" and 2'4" x 1'0" x 3"

O'Malley

- Part pitched dark grey granite
- Blasted and coloured flower design
- Also available in black granite
- Head 2'0" x 3'0" x 4" / Base 3'0' x 1'0" x 4"



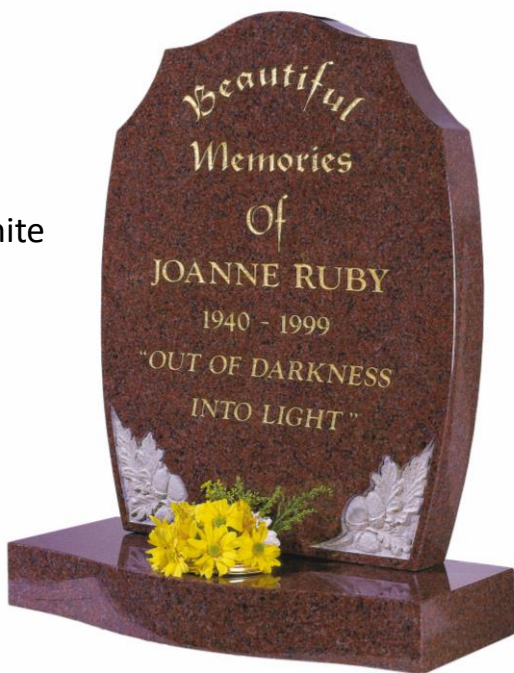


Pointing

- Part polished dark grey granite
- Peon top
- Carved flowers and cross
- Head 2'3" x 1'9" x 3" / Base 2'0" x 1'0" x 3"

Ruby

- All polished ruby red granite
- Head 2'3" x 1'9" x 3"
- Base 2'0" x 1'0" x 3"





Pollington

- Beautiful posy design and gilded lines
- Shown in black granite other materials available
- Head 2'3" x 1'9" x 3" / Base 2'0" x 1'0" x 3"

Routh

- All polished black granite
- Ornate gilded border
- Head 2'3" x 1'9" x 3" / Base 3" x 2'0" x 12"



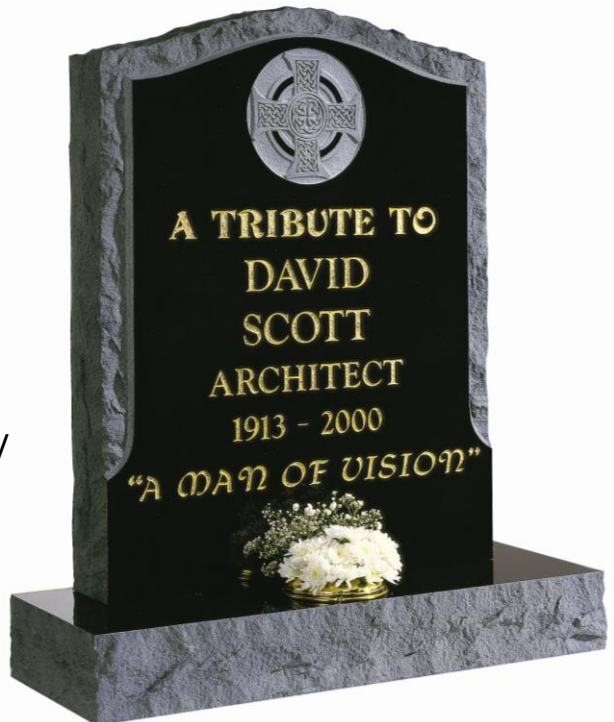


Rosehill

- Part polished black granite (other colours available)
- Head 2'3" x 1'9" x 3" / Base 2'0" x 1'0" x 3"

Scott

- Part pitched black granite
- Pitched border
- Carved Celtic cross
- Head 2'6" x 2'0" x 4" / Base 2'6" x 1'0" x 4"





Sutton

- Shown in Karin Grey granite
- With simple cross and painted flower in relief
- With or without vase
- Head 2'3" x 1'9" x 3" / Base 2'0" x 1'0" x 3"

Tunstall

- Shown in black granite and waterlily design
- Other materials and flowers available
- Head 2'3" x 1'9" x 3" / Base 2'0" x 1'0" x 3"





Weardale

- All honed dark grey granite
- Gothic shaped top, deep carved roses, antique finish
- Head 2'9" x 1'9" x 3" / Base 2'0" x 1'0" x 3"

Witham

- Features natural looking pitched edges
- Carved roses top or bottom
- Shown in South African dark grey granite on foundation base stone
- Other materials and flowers available
- Head 2'3" x 1'9" x 3" / Base 2'0" x 1'0" x 3"



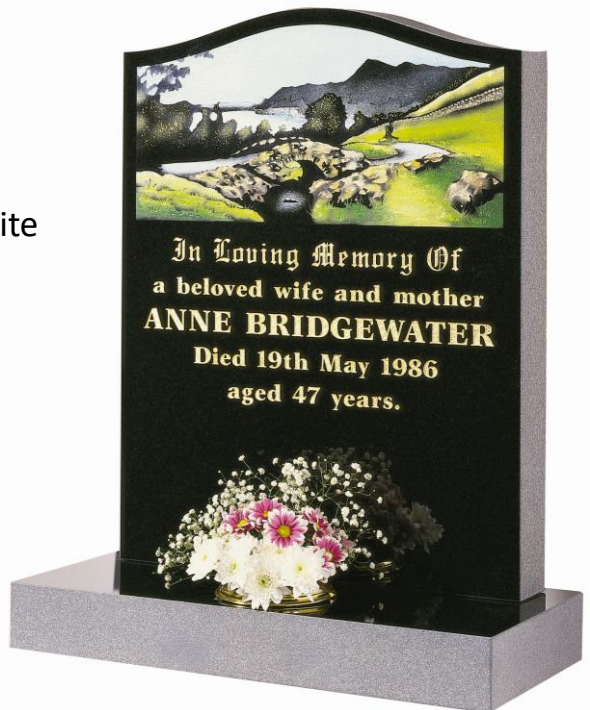


Woodmansey

- Popular gold line design
- Shown in polished black granite
- Other granite and line colours available
- Head 2'3" x 1'9" x 3" / Base 2'0" x 1'0" x 3"

Bridgewater

- Part polished black granite
- Head 2'3" x 1'9" x 3"
- Base 2'0" x 1'0" x 3"



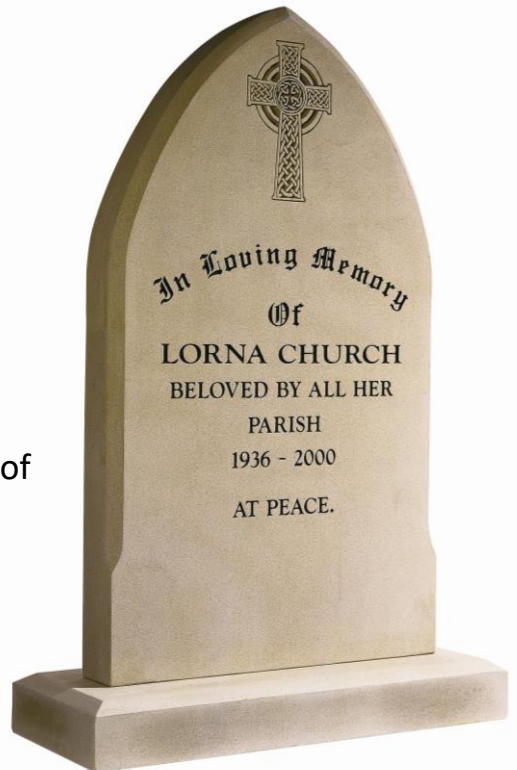


Allerston

- Traditional shape with classic cross design
- In Yorkshire stone – UK sourced materials
- Suitable for most Churchyards (subject to approvals)
- With / without flower vase

Church

- Yorkstone Gothic head with deep blasted Celtic cross
- Suitable for churchyards (subject to approval)
- Available with other design of carving or no carving
- Head 3'6" x 2'0" x 4" / Base 2'6" x 1'0" x 4"





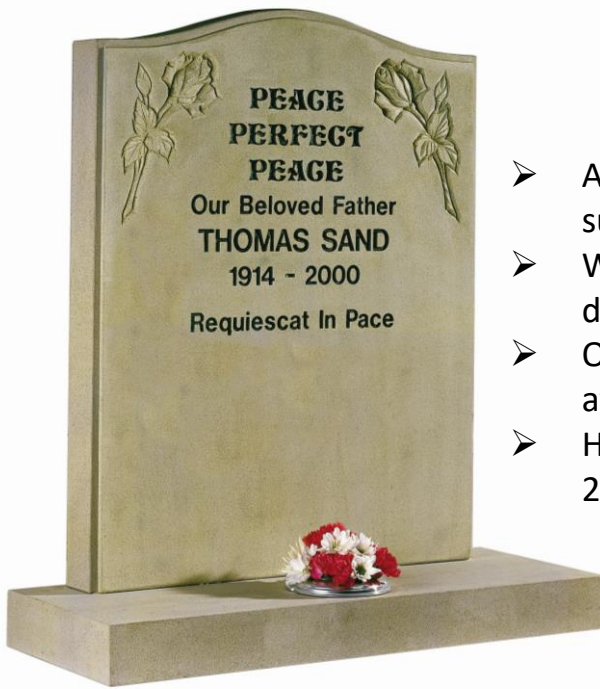
Molescroft

- Shown in honed Cathay Light Grey granite
- With deep rose carving
- Other flowers available
- Head 2'3" x 1'9" x 3" / Base 2'0" x 1'0" x 3"

Ottringham

- Majestic looking memorial in Nabresina material
- With (or without) delicate posy carving
- Head 2'3" x 1'9" x 3" / Base 2'0" x 1'0" x 3"



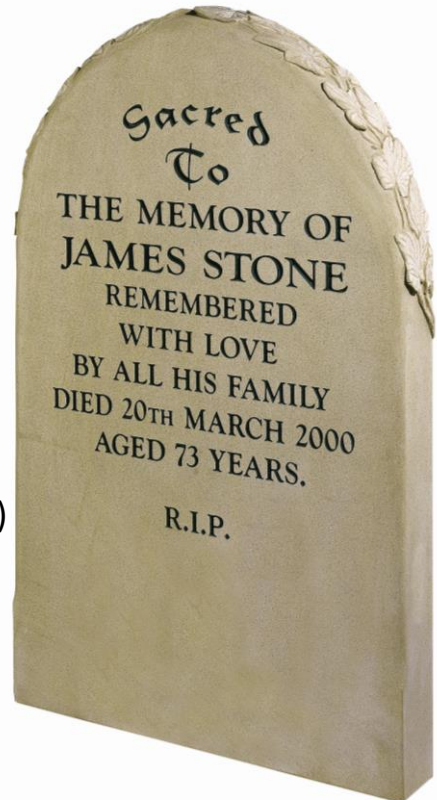


Sand

- A lovely Yorkstone memorial suitable for most Churchyards
- With deep carved roses and detailed edging
- Other flower designs available
- Head 2'6" x 2'0" x 3" / Base 2'6" x 1'0" x 3"

Stone

- Round top memorial in Yorkstone
- With (or without) relief carved ivy
- Head 3'6" x 2'2" x 4" (of which 1'0" lies below ground)





Teesdale

- In Yorkstone with deep carved Ivy
- Available with other flower design
- Head 2'3" x 1'9" x 3" or 2'6" x 1'0" x 4" / Base 2'1" x 1'0" x 3" or 2'6" x 1'0" x 4"

Thirtleby

- Simple carved floral design in Yorkshire stone
- Gothic top and chamfered base
- Available without carving
- Head 2'3" x 1'9" x 3" / Base 2'0" x 1'0" x 3"





Heart Vase

- Heart shaped granite material with vase
- Shown in grey granite but other colours available
- 12" x 12" x 6"

Blue Pearl pitched edge wedge

- Shown in blue pearl granite
- Available in other materials and finishes





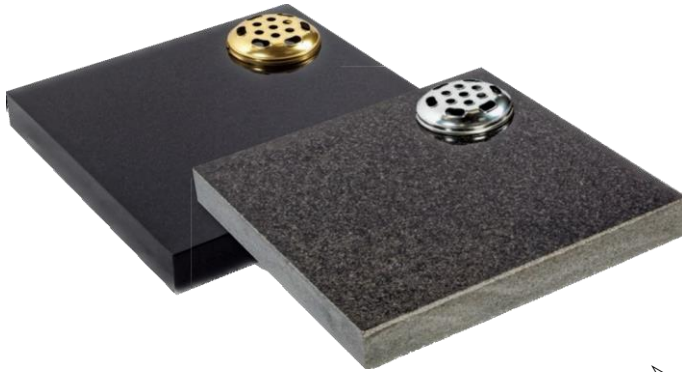
Flower Vase Selection

- Available in Yorkstone or a range of granite colours
- Range of sizes including 6" cube, 7" cube, 8" cube, 4"x 6" cube

Desk with pitched edge in Blue Pearl granite



- Shown in blue pearl granite
- Other materials and finishes available



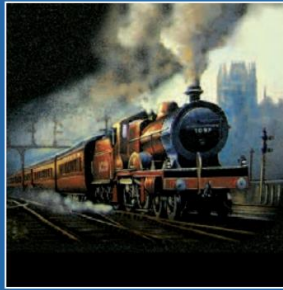
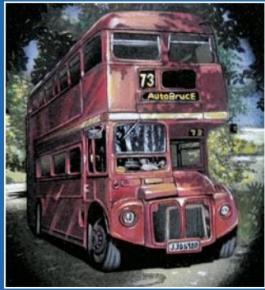
0253 G Granite

- Available in granite, slate or Yorkstone
- Part pitched edges or plain
- Available with flower vase or without

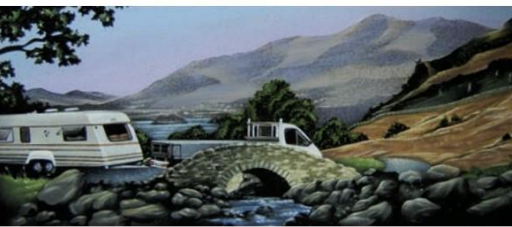
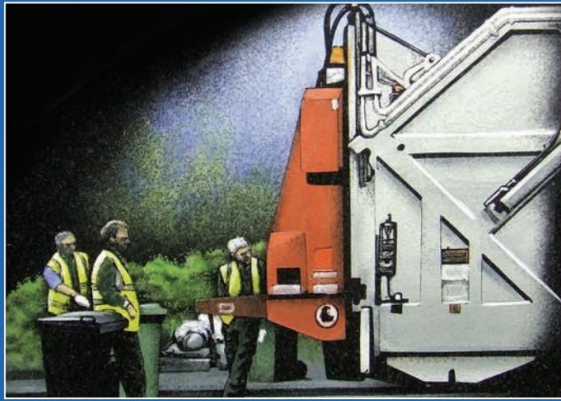
Dark Polished grey wedge

- Shown in dark grey South African granite
- Available in other materials
- With or without flower vase





Monochrome images work particularly well on darker polished granite memorials



Compact memorials (shown right) are designed to be placed within the kerb area. These are an ideal and fitting tribute for family, friends or colleagues to convey their message of remembrance in addition to the main memorial

Shown below are a selection of recycled glass and natural stone chippings perfect for complimenting any kerb set



Cobalt Blue Glass



Green Glass



Turquoise Glass



Ice White Glass



Lilac Glass



White Quartz



Polished Pebbles



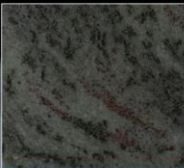
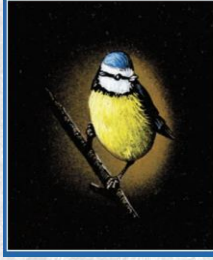
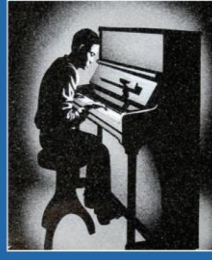
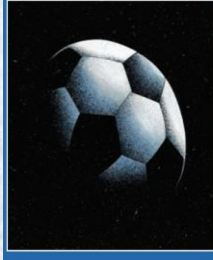
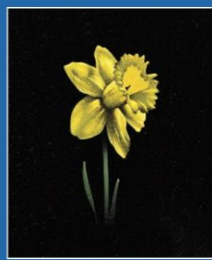
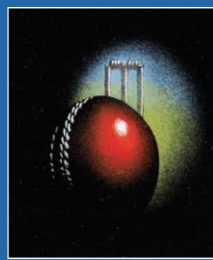
Slate



Grey Granite



White Marble



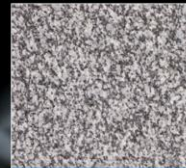
Imperial Green



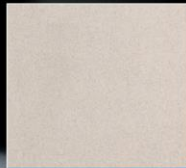
Ruby Red



Balmoral Red



Cornish De Lank



York Stone



Serena Stone



Crown Stone



Nabresina



Blue / Black Slate



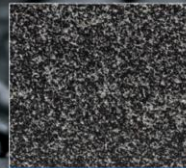
Star Galaxy



Portland Stone



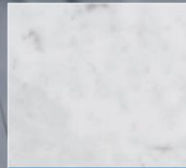
Aurora



Regal Black



Impala Grey



White Carrara Marble

Additional Inscriptions

- We can arrange to add an inscription to an existing memorial.
- To match existing font and colours.
- And take care of all necessary Church or Cemetery approvals.



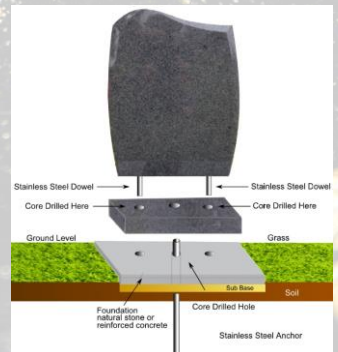
Cleaning and re-gilding existing memorials

- We can arrange to clean memorials and re-gild existing inscriptions.
- Helps reduce the impacts of years of weathering.
- Repairing or re-painting lead letters or painted lettering



Repairing damaged memorials

- Including those deemed unsafe by Council or Churchyard authorities.
- Headstones securely re-fixed using a fully approved National Association of Monumental Masons ground anchor system.





Rea Memorials

Since 1928



Great Ayton

74 Newton Road
Great Ayton
TS9 6DG

Tel: 01642 724 796

Stokesley

10 Three Tuns Wynd
Stokesley
TS9 5DQ

Tel: 01642 711 999

Darlington

297-299 North Road
Darlington
DL1 2JR

Tel: 01325 480 000



Visit: www.reamemorials.co.uk

Email: reamemorials@reafuneralservice.co.uk